

**ADEL DESOTO MINBURN COMMUNITY SCHOOLS**



**DeSoto Intermediate**

**Handbook for Students and Parents**

**2024-2025**

Dear Families,

The DeSoto Intermediate Parent Handbook is designed to help you work with the school district to obtain the best educational experience for your child. The information contained in this handbook will provide you with some basic knowledge about DeSoto Intermediate School.

This handbook is an extension of board policy and is a reflection of the goals and objectives of the board. The information should clarify school procedures, expectations, and the educational philosophy of Adel DeSoto Minburn Schools. We hope you will find this book a helpful reference throughout the school year. Please review it with your student and let us know if you have any questions.

At other times throughout the school year you will receive supplementary notes and calendars of events, which should be kept along with this handbook. We hope the various newsletters and this handbook will be a valuable part of the many ways we can communicate with your family.

We believe that teamwork is vital to our success and that of your child's. We want to work as a team to ensure your child has an excellent experience at DeSoto Intermediate.

Sincerely,

**Amy Hemphill**

DeSoto Intermediate Principal (5th-6th)

Our mission is to enable all students to master the skills, acquire the knowledge, and develop the social skills necessary for them to reach their full potential as citizens who can successfully meet the challenges of a changing society.

### **Adel DeSoto Minburn District Belief Statements**

We believe:

- our school exists for the purpose of providing our students with the opportunity to acquire knowledge and master
- the skills essential to their future success, and students can learn and achieve when given the right conditions.
- our school exists to provide the best possible conditions for student learning and success.
- all students are entitled to expanded opportunities to master what is ultimately expected of them.
- all students should be required to demonstrate that they can apply the knowledge they have acquired.
- all students should be consistently held to high standards of performance.
- our school's effectiveness is maximized when students, staff, and community share a vision of success.
- our school can be continuously improved by seeking and using the best available knowledge and data to guide
- our ongoing planning, decision making, and program delivery.

### **ADM Shared Mission**

ADM Community School District, in partnership with our communities, is committed to engaging all students in a challenging and supportive learning environment that ensures individual student success as measured by a comprehensive system of assessments.

### **ADM Shared Vision**

ADM Students Will Experience Success Today and Achieve Their Dreams Tomorrow.

*“Experiencing Success Today, Achieving Dreams Tomorrow”*

**Administrative Staff**

**District Office 993-4283:** 215 North 11<sup>th</sup> Street, Adel: Mr. Greg Dufoe, Superintendent

**District Office 993-4283:** 215 North 11<sup>th</sup> Street, Adel: Mr. Travis Wilkins, Assistant Superintendent

**Adel Elementary 993-4285:** 1608 Grove Street, Adel: Mrs. Kimberly Anderson, Principal

**DeSoto Intermediate 834-2424:** 317 Spruce Street, DeSoto: Mrs. Amy Hemphill, Principal

**Meadow View Elementary 478-1321:** 1300 S. 15th Street, Adel: Mrs. Jodi Banse, Principal

**ADM 7-8 Middle School 993-3490:** 801 Drive South, Adel: Mrs. Kim Timmerman, Principal

**ADM High School 993-4584:** 801 Nile Kinnick Drive South, Adel: Mr. Lee Griebel, Principal

### **Address Changes**

Students who are moving from the school district or who have moved to another location within the district should inform the teacher and school office. The parent or guardian will need to utilize the Infinite Campus parent portal to enter the address change.

parents of absent students make their request early in the school day so that the materials can be readied by the end of the school day. Students will have two days to make up schoolwork for each day they are gone.

If parents request that a “buddy” bring work home for an absent student, it is the parent’s responsibility to pick up the materials from the “buddy.” **If a student is ill and not in school for the day, they will not be allowed to participate in any school sponsored events that evening (unless approved by the building principal).**

### **Attendance, Chronic Absenteeism, and Truancy**

The district believes that traditional, in-person school attendance leads to the greatest learning opportunities for students. Students who are present in school and engaged active learners take greater ownership over their educational outcomes. For this reason, it is the priority of the district to foster regular student attendance throughout the school year and reduce barriers to regular attendance for students in the district.

In 2024 the State of Iowa passed new laws that define Chronic Absenteeism and Truancy and outline required intervention measures that schools must take in response to student attendance. Parents and

families should review the information below to ensure their understanding of ADM's attendance, chronic absenteeism and truancy policies in light of Iowa's laws.

**Compulsory Education Law:** Iowa's compulsory education laws require that parents within the school district who have children over age six and under age sixteen by September 15, in proper physical and mental condition to attend school, will have their children attend school. Students are required to attend school the number of hours school is in session in accordance with the school calendar and for a minimum of 1080 hours. Students not attending the minimum hours must be exempted from attendance or referred to the county attorney.

### **Attendance and Reporting Absences**

Students are required to be in attendance for 1080 hours per school year unless their absences have been excused by the principal. Parents are expected to notify the school office to report a student's absence prior to the start of the school day. Parents can notify the school office in one of the following three ways:

1. Call the Building Office:
2. Email the Building Office:
3. Infinite Campus:
  - a. Log into your Campus Parent Portal account
  - b. Click "More" from the left navigation menu
  - c. Select "Absence Request".
  - d. Complete the form and submit.

### **Excused Absences**

Student absences will be classified as excused and unexcused. Excused absences include:

- Illness
- Medical appointments
- Family emergencies
- Recognized religious observances
- School sponsored or approved activities
- Other exemptions listed in Board policy
- Other absences approved by the building principal

### **Family Trips or Vacations**

Families are encouraged to schedule vacations and trips when school is not in attendance. However, family trips or vacations will be identified as an excused absence if notification is provided to the building office. Students are expected to make arrangements for the time that will be missed prior to their absence.

- **Note:** While ADM has the local authority to view family trips and vacations as excused absences, Iowa law requires missed days due to trips and vacations to count toward calculations of chronic

absenteeism and truancy which may result in legally required interventions as explained further below.

### **Unexcused Absences**

Absences that do not fall within the categories listed above will be considered unexcused.

In the event of a parent refusal to state why a student will be absent from school, the absence will be logged as unexcused.

**Late Arrival To School:** Arrival to school past the start of the school day for reasons that do not fall within the categories listed above will be considered unexcused.

---

### **Chronic Absenteeism**

Chronic absenteeism is defined as any absence from school (see exemptions listed below) for more than ten (10) percent of the hours of the DeSoto Intermediate quarter.

### **Truancy**

Truancy is defined as a child of compulsory attendance age who is absent from school for any reason (see exemptions listed below) for at least twenty (20) percent of the hours of the DeSoto Intermediate quarter.

### **Chronic Absenteeism and Truancy Exemptions:**

Calculations of chronic absenteeism and truancy do not include absences for students who:

- have completed the requirements for graduation in an accredited school or have obtained a high school equivalency diploma;
- are excused for sufficient reason by any court of record or judge;
- are attending religious services or receiving religious instruction;
- are unable to attend school due to legitimate medical reasons;
- has an individualized education program that affects the child's attendance;
- has a plan under Section 504 of the federal Rehabilitation Act, 29 U.S.C. §794, that affects the child's attendance;
- are attending an approved or probationary approved private college preparatory school;
- are attending an accredited nonpublic school;
- are receiving independent private instruction; or,
- are receiving competent private instruction.
- are excused under Iowa Code §299.22; and
- are exempt under Iowa Code §299.24.

### **Chronic Absenteeism and Truancy Consequences:**

Students are subject to disciplinary action for chronic absenteeism and truancy including suspension and expulsion. It is within the discretion of the principal to determine, in light of the circumstances, whether a student may make up work missed because of truancy. Students receiving special education services will not be assigned to in-school suspension due to chronic absenteeism and truancy unless the goals and objectives of the student's Individualized Education Program are capable of being met.

#### **1. Chronic Absenteeism Notification (10%)**

- a. When a student meets the threshold to be considered chronically absent, the school official will;
  - i. Send notice by mail or e-mail to the county attorney where the district's central office is located.
  - ii. Notify the student, or if a minor, the student's parent, guardian or legal or actual custodian via certified mail that includes:
    - information related to the student's absences from school; and
    - the policies and disciplinary processes associated with additional absences.

#### **2. School Engagement Meeting (15%)**

- If a student is absent from school for at least fifteen percent of the hours in the grading period of each school building as established by the district, the school official will attempt to find the cause of the absences and start and participate in a school engagement meeting. The purpose of the meeting is to understand the reasons for the student's absences and attempt to remove barriers to the student's ongoing absences; and to create and sign an absenteeism prevention plan. All of the following individuals must participate in the school engagement meeting:
  - The student;
  - The student's parent, guardian or legal or actual custodian if the student is an unemancipated minor; and
  - A school official.

#### **3. Absenteeism Prevention Plan and Weekly Contact (15%)**

- The absenteeism prevention plan will identify the causes of the student's absences and the future responsibilities of each participant. The school official will contact the student and student's parent/guardian at least once per week for the remainder of the school year to monitor the performance of the student and the student's parent/guardian under the plan. If the student and student's parent/guardian do not attend the meeting, do not enter into a plan or violate the terms of the plan, the school official will notify the county attorney.

#### **4. Other Penalties**

- In response to Chronic absenteeism or Truancy, the building principal may issue penalties in addition to the requirements listed in Section I of this regulation. Penalties may include, but are not limited to;
  - Non-Academic Penalties
    - Oral or written notices beyond the generated absenteeism prevention plan to the student and his or her parents;
    - Conferences with the student and parents,
    - Written contracts with the student and parents,
    - Loss of non-academic privileges such as extracurricular activities, open campus, late arrival, early dismissal.
    - Other penalties as determined by the building principal.
  - Academic Penalties
    - Late work not receiving credit
    - Dropped from course
    - In-school suspension
    - Out of school suspension
    - Other penalties as determined by the building principal.

### **Communications to and from School**

When sending a note or money to school, the student should receive clear instruction from the parents about who is the appropriate person to receive the note or the money. Also, the school regularly sends notes and papers home with students. Parents need to remind their child to notify them of notes or papers from school for the parents. Parents are responsible for knowing the contents of the notes or papers sent home. Please check your student's backpack.

Parents who use email to notify teachers/office personnel of changes in arrival/dismissal plans should not assume the teacher/office personnel has received the communication until there is a reply email. This ensures that your child is following the correct arrival/dismissal plan.

### **Concerns**

If parents have a concern regarding a classroom and/or teacher situation in school, they are urged to first contact the teacher involved to discuss the problem and possible solutions. If the concern cannot be resolved at this level, the parent should then request a conference with the principal.

If the parent still feels that the concern has not received proper consideration, further recourse is available through the office of the superintendent. Details for initiating such action may be obtained from the principal. A general school concern not pertaining to a classroom and/or teacher situation should be directed to the principal's office.

### **Concerns About School Districts or Their Governing Boards**



## **Local Appeals**

Parents, guardians, and community members should work with district staff to resolve disagreements or concerns. Potential actions include:

- Contact the teacher or service provider
- Contact the principal or direct supervisor for assistance
- Contact the superintendent
- Contact the school board
- Make a formal request of or complaint to the school board

Some formal requests are made of local boards on a routine basis, such as open-enrollment. School boards may also take action on requests made of them by parents, guardians, and community members that are not routinely found on the agenda. An example might be a request to review curricular materials. Parents, guardians, and community members should read and understand their local board's policies on making requests or filing complaints.

If a local school board makes a decision on a formal request, it may be subject to administrative review by the state board or the director of the Department and/or to further challenge in district court. [[Iowa Code 290.1](#)]

## **Calls to the Department of Education:**

These are the general steps that may be taken by parents, guardians, and community members when they have concerns about public school districts or their governing boards.

Parents or guardians who call the Department are generally provided with the contact information for the [School Improvement Consultant](#) who serves their area of the state. Consultants ask the same questions of all parents to determine how to handle their concerns, many of which help inform parents of potential next steps. In general, before the Department can or should take action that interferes with the local process for dispute resolution, parents should exhaust all opportunities available to them to settle disagreements by engaging with the district.

If the Department is contacted about any of the following, intervention may be required:

- Potential violation of the rights of a student with a disability, including bullying
- Potential bullying or harassment of a student on the part of a staff member
- Potential harm to a child or student
- Any other act in disregard of legal requirements that places students or staff at risk

## **District Court:**

Certain final decisions by a local school board will give rise to a right for the injured party to pursue the issue in district court. This is only true for final action of the local board for some decisions. Only individuals sufficiently impacted by the board's decision will have the ability to challenge the decision in district court.

### **Board of Educational Examiners:**

Parents and guardians may file a complaint with the Board of Educational Examiners (BOEE), if appropriate. Department of Education staff are required to file a report of any misconduct suspected of an educator licensed by the BOEE. [[Iowa Code 272.15\(2\)](#)]

### **Contacting Students During the School Day**

Students are expected to keep cell phones turned off during the school day. Smart watches should not be used to send/receive texts or phone calls during the school day. Parents wishing to reach their child during the school day will not be able to do so on individual student cell phones or smart watches, as those are turned off during the school day. Students in violation of this expectation may be asked to turn in their devices to the office for parent pick up.

It will be the policy of the PK-6 Schools that any person, parent(s) included, wishing to speak directly to a student, shall report to the office. The principal or designee will contact the classroom teacher and have the student brought to the office where personal messages can be relayed. Persons other than parents/guardians will not be allowed to contact pupils unless it has been cleared through the office by the parent/guardian.

The telephones at the school are business telephones. If a child has a legitimate reason to use the telephone permission will be granted by the teacher, principal, or school secretary. Because of the number of calls the school receives, it will be necessary that conversations by pupils be kept to a minimum. Except in an emergency, students are not called to the telephone. We will be happy to deliver important messages to the students involved.

## **DAILY SCHEDULE**

### **DeSoto Intermediate**

7:45 A.M. Car Riders and Bus Riders eating breakfast enter building

7:45 A.M. Breakfast service begins

8:00 A.M. Classes begin

3:00 P.M. Bus pick up/parent pick up/walkers (M-Th)

### **Friday Dismissal:**

1:05 P.M. First Bus pick up/parent pick up/walkers

1:15 P.M. Last Bus Pick Up

### **Emergency Drills**

Quarterly, the school holds emergency, fire, and severe storm and twice yearly evacuation/lockdown drills. At the beginning of each semester, teachers notify students of the procedures to follow in the event of a drill. Emergency procedures and proper exit areas are posted in all rooms. During emergency drills or in case of real emergencies, our teacher associates will assist students who require additional assistance in reporting to the designated emergency area.

Students are expected to remain quiet and orderly during a drill or an emergency. Students who pull the fire alarm or call in false alarms, in addition to being disciplined under the school district's policies, rules and regulations, may be reported to law enforcement officials.

### **Emergency Information**

At the beginning of each school year, parents must complete emergency contact information in Infinite Campus upon registration. It is the responsibility of the parents to update any student or household emergency contact information (phone numbers, address, secondary contacts, etc.).

### **Legal Status of Student**

If a student's legal status, such as the student's name or the student's custodial arrangement, should change during the school year, the parent or guardian must notify the school district. The school district needs to know when these changes occur to ensure that the school district has a current student record. In order for the school to correctly follow judicial decrees, we are asking legal guardians to inform us of the legal child custody and guardianship arrangements. We would appreciate the legal guardian sharing with us information regarding who has custody and under what conditions the other parent may exercise custodial and other rights regarding the child. If there is a dispute between parents, this should be resolved outside of school.

### **Lost and Found**

A lost and found center is kept at our school for misplaced items. Students should check immediately for any item they might have misplaced. It is recommended that your child be encouraged to be responsible for their personal property. Articles should be labeled, especially coats, boots, hats, etc. Valuables, electronics and money not needed at school should be left at home. After a reasonable amount of time, items will be cleaned out of lost and found to keep the items current.

### **Procedures for Students Who Are Transferring to Another School or School District**

The school district automatically transfers a student's records to a new school district upon receipt of a written request from the new school district for the student's records. Parents are hereby notified that the student's records will be sent. Under these circumstances, parents, upon request, will be given an opportunity to view the student's records that were sent and a right to a hearing to challenge the content of the student's records that were sent. Parental consent is not necessary to forward a student's records to a student's new school district or for the school district to request them from a student's previous school district. When a new student transfers

into the school district, the student's records are requested from the previous school district.

### **School Office Hours**

The school offices are open from 7:30 A.M. until 4:00 P.M. on Monday-Friday. On early dismissal days when professional development meetings or conferences are scheduled, the school office typically remains open until 4:00 P.M. On other early dismissal days (weather/holidays), the school office will be closed within a reasonable time after the dismissal.

### **Visitors**

All visitors to any ADM building must sign-in at the building office. Visitors to the buildings will be issued a lanyard to identify their presence in the building. When delivering a quick message or an item to school, parents will be asked to leave the item or message with the administrative assistant. The student will be called to the office during a normal transition time of the day. This will help us avoid disruption to our instruction.

### **SUPPORT SERVICES**

#### **GATE [Link to Handbook](#)**

The Adel DeSoto Minburn Community School District Gifted and Talented Education (GATE) Program supports the needs of K-12 advanced learners through multiple levels of service. The intermediate level program (grades 5-6) has three levels of service, which may be used to meet the needs of identified students. The GATE instructor, with input from the student, classroom teachers, and parents, will prepare a P.E.P. (Personalized Educational Plan) to include the level(s) of service needed to meet the student's individual needs.

#### **Level I: Pull-In**

Consistent with the intent and purpose of the ADM GATE Plan, highly gifted students may be offered a pull-in program. Pull-in students are included in this plan because students benefit both from individualized instruction and from interaction with ability peers. The pull-in program will address the areas of academic and general intellectual abilities.

#### **Level II: Modification of Regular Curriculum**

The GATE instructor serves as facilitator for students and teachers in curriculum compacting, acceleration and enrichment in any classroom in which the student demonstrates the need for P.E.P. Appropriate assessments such as Iowa Assessments, District Benchmarks, Cognitive Abilities, Gates MacGinitie, Iowa Acceleration Scale, out-of-level testing, teacher recommendation, and student portfolios may be administered in order to determine the student's educational needs. The GATE and classroom instructors will collaborate to create a plan of instruction and implementation will be conducted by the person designated on the plan.

#### **Level III: Special Opportunities**

Special events and opportunities for specific gifted areas including creativity, leadership, and visual/performing arts may be offered. Students will be identified for these activities by appropriate inventories or assessments, including observation, Iowa Assessment scores in one or more areas, portfolio assessments, and teacher recommendation. Opportunities offered will vary from year to year, depending upon availability of special events,

cost, scheduling, and transportation. Special opportunities could include activities such as Knowledge Bowl, Invention Convention, or Children's Theater.

## **GUIDANCE**

The guidance program of the Adel DeSoto Minburn School District offers individual and small group opportunities, in addition to whole group guidance lessons that are taught throughout the year. Individual and small group counseling is centered on student need. D.A.R.E. classes are held in fifth grade. Topics addressed in D.A.R.E. include handling peer pressure, drugs, alcohol and tobacco, and making responsible choices.

## **LIBRARY**

The library Media Center is a resource area for use by students and staff. A variety of nonfiction and fiction books, magazines, and reference materials. A quiet atmosphere conducive to good study habits will be maintained in the Library Media Center.

Students will be made aware of the responsibility that accompanies the use and sharing of library materials. Book care is stressed and students are asked to transport their books to and from school in a manner that preserves books.

Materials may be checked out for a two-week period of time and may be renewed if necessary. Damaged/lost books will be charged to the student at repair/replacement costs.

## **MUSIC**

**Vocal:** All students are given general music class instruction on a scheduled basis. All students are required to participate in Music Programs as a part of our curriculum.

**Instrumental:** Lessons and Band Rehearsals are offered for students in 5th and 6th grade on a regular schedule. Band students are required to participate in all Music Programs.

**Choir:** Lessons and Choir Rehearsals are offered for students in 5th & 6th grade on a regular schedule. Choir students are required to participate in all Music Programs.

## **Standards Based Learning and Reporting**

Standards Based Learning communicates how students are performing on clearly defined objectives called power standards. The purpose of Standards Based Learning is to identify what a student knows or is able to do in connection to a standard. At the quarterly reporting period, students will be identified as beginning, developing, secure, or exceeding in relation to academic performance, and this identification will be based on multiple pieces of evidence. The purpose of our progress reporting is to communicate the level of student performance of each power standard and to drive classroom instruction to meet the needs of individual learners. Effort, behavior, and participation will be reported separately from content areas, and they will not be factored

into a student's level of academic performance. Reporting on the standards will be shared after each quarter of the school year.

### **Intervention Team Meetings**

The Intervention Team Meeting model is a system for supporting classroom teachers on a day-to-day basis within a building. The team is composed of teachers selected for the team, plus the teacher requesting assistance. When appropriate, other staff members, a parent, and/or a student may be included as fully participating team members. The team serves as a within-building peer problem-solving group. The team is based on the belief that teachers have the skills and knowledge to effectively teach many students with academic and behavior deficits by working in a problem-solving process. The goals of the model are to help regular classroom teachers to individualize instruction to meet the needs of all students.

The system is designed to provide prompt, individualized support of teachers. Teachers refer their classroom concerns to a team of selected teachers within the building. The team and the teacher requesting assistance jointly engage in a structured process of identifying the problem, brainstorming solutions, and planning interventions. Parents, students, and other specialists participate in cases when requested by the team.

A series of follow-up meetings are held to evaluate the student's progress and to plan further intervention. When appropriate, students are referred for further evaluation involving special education services. The Intervention Team will also hold the responsibility of bringing special education referrals to the attention of the Heartland Area Education Agency.

### **Special Education Services**

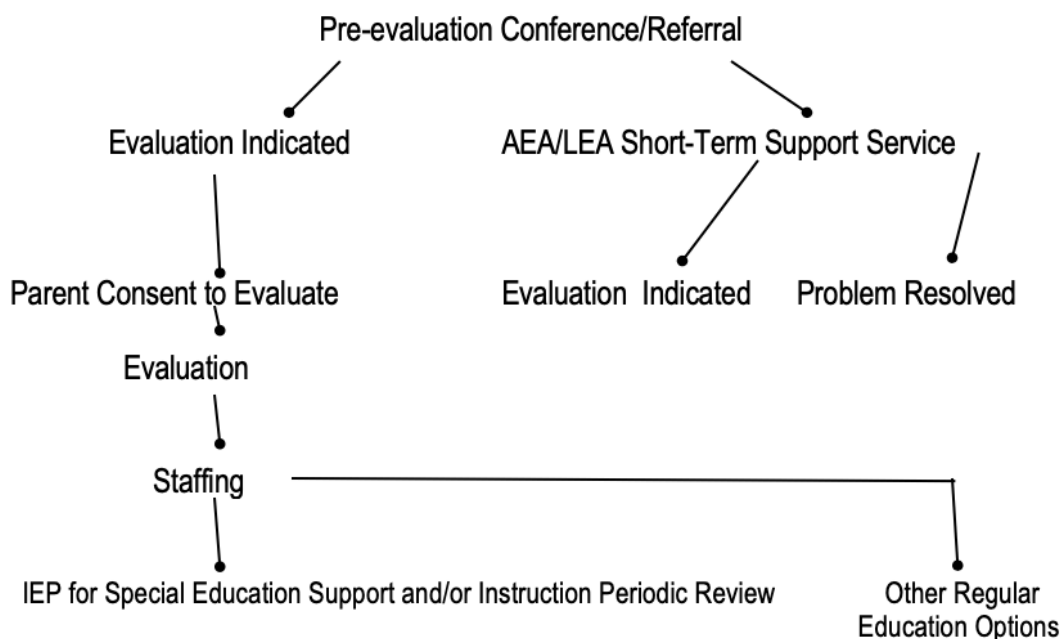
Parents and teachers can begin the referral process for students to be evaluated for possible placement into special programs. The referral forms are available through our Intervention Team. Programs available are: speech, hearing, emotional, learning, mental, physical, visually impaired, behavior, and severe/profound. Please contact the classroom teacher or building principal for further information.

The recommended referral procedures listed below assure compliance with parent and children's rights and fulfill necessary record requirements. See the flowchart, which outlines the referral procedure.

1. A pre-evaluation conference/referral should be held with the principal, the staff member, other appropriate school personnel, and AEA support staff to discuss the existing problem to see if it can be resolved at the classroom level. At this level AEA/LEA personnel may be able to provide short-term comprehensive evaluations for very mild problems.
2. If it is necessary to seek additional information, the principal will:
  - a. Secure written permission from the child's parents by using the Part II-Parent Consent for Evaluation. This form may include a request for comprehensive evaluation.
  - b. Forward the Referral Form and Parent Consent for Evaluation Form to the appropriate personnel or the Heartland Zone Coordinator.
3. Upon receiving the completed referral, Heartland personnel shall complete the appropriate types of

evaluations and return a written report to the principal. Evaluations conducted by local school personnel, will be coordinated by the principal. Specific evaluations may be requested. However, when placement in a special educational instructional program is being considered, the evaluation shall include, but is not limited to the following: Speech and Language, Social Functioning, Academic Status, Hearing, Intellect, Behavioral Observation, Health History, Motor Functioning, Educational History, Vision, Adaptive Behavior, Career-Vocational.

### REFERRAL PROCEDURE FLOWCHART



### Plan For The Integration of Special Needs Students

The Adel DeSoto Minburn Community School District has adopted policies which afford special needs children in the district an appropriate educational program within the least restrictive environment. The district's professional staff, in cooperation with the AEA, will evaluate, staff, and provide an individual educational plan (IEP) for each special needs child in need of special education services. Procedures and guidelines for implementing the process shall include, but not be limited to, the following considerations for each child:

- consideration of a full continuum of placement options
- documentation to reflect the appropriateness of the placement decision
- reconsideration of the appropriateness of the placements decision at the annual review
- reiteration of due process procedures for parents should there be any placement disagreement
- consideration of physical, functional, social, and societal integration needs

The district will cooperate with the AEA, other local school districts within the AEA, districts outside the AEA, and out-of- state facilities to assure the appropriate placement of each special needs student.

In-service activities related to least restrictive environment, as well as all other aspects of the special education process, will be provided for district staff and parents at the district and building level through group presentations and written communications. One-on-one in service opportunities which occur throughout the special education process will continue to be utilized.

The district's compliance with least restrictive provisions will be evaluated through the individual educational plans (IEP) developed for each special needs child, compliance monitoring conducted by the AEA or Department of Education, and parent satisfaction with the educational progress made by their child.

ADM has several collaborative science, social studies and math classes at each grade level. In collaborative classes there are two teachers, a regular education teacher and a special education teacher. The regular education teacher teaches the same concepts to all students. The special education teacher watches for any student who might struggle for whatever reason, and she/he instructs in a more individual way that reinforces what the regular education teacher has presented. It is an added bonus to our students when there are two teachers in the classroom.

Grievance Procedure:

Title IX of the Educational Amendments of 1972, Section 504 of the Rehabilitation Act of 1973 and the ADM Harassment Policy all have grievance procedures for employees, students, and parents. The grievance procedure for Title IX is found on page 27 of this handbook.

## **DISTRICT INFORMATION**

### **Emergency School Closing**

It occasionally becomes necessary during the year to close school. Weather is usually the reason, but it may be necessary due to mechanical failure or perhaps some other reason for the safety of our students. Students will follow their typical dismissal procedures unless other arrangements have been communicated with the school office.

All emergency school closings will be communicated through a School Messenger Parent Notification System. This system gives the district a method of communicating with parents over text, email, and phone in an efficient manner.

Although regular school attendance is encouraged, parents may pick up their students from school anytime severe weather develops. Parents always have the option of not sending their children when they feel the weather is too severe. Please be assured that every effort will be made to provide for the safety of every child.

### **Review of Instructional Materials:**

Board Policy 605.2 allows parents of enrolled students or residents of the school district access to review instructional materials used in classrooms. Parents and residents are asked to use the following process to review instructional materials.



- **Parents:** Parents of enrolled students should contact their student's teacher to request a review of instructional materials used in the classroom. Instructional materials may be viewed on school district premises.
- **Residents:** Residents should contact the building principal to request a review of instructional materials used in the classroom. Instructional materials may be viewed on school district premises.

### **Opt-Out of Instructional Materials**

Board Policy 605.2 allows parents of enrolled students to request that a student be prohibited from accessing instructional materials used in classrooms. To opt a student out of instructional materials, a parent or guardian must complete an opt-out form found in [Board Policy 605.3E5](#) or contact the building office for an opt-out form.

### **Volunteers**

School volunteers are an important and integral part of our school. There are many things they can do that help the staff do an even better job teaching our students.

The ADM Community School District has a volunteer program. Interested individuals wishing to volunteer should call the office of the building they would like to volunteer to help out in. For the safety of our children, all volunteers will be asked to complete a background check prior to working in the school. Volunteers can work directly with students, reading to children, listening to children read, helping children locate books, or tutoring limited English-speaking students. They can assist teachers in classrooms, working with students or materials. Volunteers do such things as developing bulletin boards from teacher directions, develop learning stations and listening centers per teacher directions, assist with special projects in the classroom, and type items for teachers.

## **HEALTH INFORMATION**

### **Communicable and Infectious Diseases**

Students who have an infectious or communicable disease are allowed to attend school as long as they are able to do so and their presence does not pose an unreasonable risk of harm to themselves or does not create a substantial risk of illness or transmission to other students or employees. If there is a question about whether a student should continue to attend classes, the student shall not attend class or participate in school activities without their personal physician's approval and the final decision will be an administrative decision taking into account relevant medical opinion. Infectious or communicable diseases include, but are not limited to, mumps, measles and chickenpox.

### **Health Services and Procedures**

The Adel DeSoto Minburn School District employs a school nurse at each building site. The nurse is present at the building if an emergency should arise. In general, the school nurse is responsible for keeping records and conducting screening on certain aspects of our students' health.

Each student is given a hearing test yearly and vision screening as needed. If an area of concern is detected, the home will be contacted so that professional referral may be made.

Another major function is in the area of communicable diseases. The State Department of Health has regulations on immunization requirements that must be met if a child is enrolled in school. The office maintains the appropriate records and will notify you if your child needs updating in this area.

**If prescription medication is to be administered at school, the Medication Authorization form must be filled out and signed by the parent/guardian.** Please send only the necessary amount of medication. A copy of this form is found in the back of this handbook. Additional forms may be obtained at the school office or on the school websites, [www.admschools.org](http://www.admschools.org)

Rules and procedures concerning the administration of medications to those pupils who must take medication during school hours follow. No medication shall be dispensed to any pupil in the Adel DeSoto Minburn Community School system unless the following prerequisites are met:

1. The medication must be prescribed by a licensed medical or osteopathic physician or dentist.
2. The parent must sign a request to have this prescribed medication dispensed to their child according to the written directions of the prescribing physician or dentist.
3. The prescription and the parent's signed request to dispense the medication are to be kept on file in the office from which the medication will be dispensed.
4. The medicine shall be maintained in the original prescription container, which shall be labeled with:
  - a. name of student
  - b. name of medication
  - c. directions for use
  - d. name of physician or dentist
  - e. name and address of pharmacy
  - f. date of prescription
5. The medication, while at school, shall be kept in a designated place, in a locked drawer or cabinet. When required, refrigeration will be provided.
6. In each building, access to the medication shall be under the authority of the nurse, administrative assistant, or principal.
7. An electronic record will be kept on any medication(s) given at school. This record will include the student's name, the name of the medication, the amount of medications to be given, and the time at which it is to be given. After the medication is given, the person dispensing the medication will initial the medication sheet with his/her initials. This record shall be kept each time the medication is given at school, on the appropriate "Medication List" form.
8. In accordance to 655 IAC 6.2(5) the position of the Iowa Board of Nursing is that school nurses may not administer natural remedies, including essential oils, and supplements to school children during the school day.

Over-the-counter medication such as aspirin, Tylenol, cough syrups, cough drops, etc. requires a Medication Authorization Form with parent's signature or the signed Annual Health Update indicating permission for Tylenol or Ibuprofen. The medication must be brought to school in the original labeled container. The nurse's office stocks a small supply of Tylenol, Ibuprofen, cough drops and TUMS. Parent/guardian must provide liquid or chewable Tylenol or Ibuprofen if that form of medication is preferred. The registered nurse may also determine

that an over-the-counter medication, ordered by a parent, could be detrimental to the child. In this case the registered nurse may refuse to administer the medication and state the reasons, in writing, to the parent.

### **Hearing Screening**

Hearing is very important to a student's ability to listen, learn, and progress satisfactorily in school. Therefore, students will receive a hearing screening. Parents will be notified of the students who do not pass this screening. If you do not want your child to participate in the screening by the school audiologist, please contact the school. If there are any questions about the hearing testing program, please feel free to see your school nurse or principal.

### **Immunizations**

Prior to starting school or when transferring into the school district, students must present an approved Iowa Department of Public Health immunization certificate signed by a health care provider stating that the student has received the immunizations required by law. Students without the proper certificate are not allowed to attend school until they receive the immunizations or the parent makes arrangements with the school nurse. Only for specific medical or religious purposes are students exempted from the immunization requirements. Parents who have questions about immunizations should contact the school nurse through the Principal's office.

### **Physical Examinations**

Parents are encouraged to have their children receive periodic physical examinations. New kindergartners are required by Board Policy to have a physical exam before starting school in the fall.

### **Dental Screening**

Legislation was passed by the State of Iowa, effective July 1, 2008, requiring all children entering Kindergarten and Ninth grade to have a dental screening. The dental screening form will be mailed in the Kindergarten packets and the Ninth grade forms will go home in the last report card for Eighth grade. Your dentist will also have the appropriate form that needs filled out and returned to school with your child. The purpose of the dental screening is to improve the oral health of Iowa's children.

### **Speech Screening**

Students are screened for speech based on a referral by the parent or teacher. Supports are provided based on the results of the referral. If you have any questions, please contact the building principal. The speech clinician works in the school and is an Area Education Agency Employee.

### **Student Illness or Injury at School**

A student who becomes ill or is injured at school must notify his or her teacher or another employee as soon as

possible. In the case of a serious illness or injury, the school shall attempt to notify the parents according to the information in Infinite Campus. If the student is too ill to remain in school, the student is released to the student's parents or, with parental permission, to another person directed by the parents. **Students need to be fever (<100.4 degrees), vomit and diarrhea free, without the aid of medication, for 24 hours before returning to school.** Students need to be fever, vomit and diarrhea free, without the aid of medication, for 24 hours before returning to school. While the school district is not responsible for treating medical emergencies, employees may administer emergency or minor first aid if possible. The school contacts emergency medical personnel if necessary and attempts to notify the parents regarding where the student has been transported for treatment.

#### Food Allergy Policy/Procedure

Adel DeSoto Minburn School District will promote a safe environment that strives to protect children with food allergies and provides a climate that supports their positive psychological and social development. Children with food allergies need an environment where they feel secure and can interact with caring people they trust.

Severe allergies are serious and can be fatal. Anaphylaxis, a potentially life-threatening allergic reaction, can be triggered by exposure to one or more allergens, including foods, insect stings, drugs and latex products. Anaphylaxis can affect multiple areas of the body, such as skin, respiratory tract, gastrointestinal tract, and the cardiovascular system. Symptoms can include severe headache, nausea and vomiting, sneezing and coughing, hives, swelling of the lips, tongue and throat, itching all over the body, and anxiety. The most dangerous symptoms include difficulty breathing, a drop in blood pressure, and shock-each of which can be fatal.

Adel DeSoto Minburn School District cannot guarantee that a student will never experience an allergy-related event while at school. However, ADM has created this policy to reduce the risk so students with life-threatening allergies will not experience an allergy-related event at school. ADM recognizes that all students are unique and may require further allergy accommodations to provide optimal safety. If you feel your child requires more than what this policy outlines, please contact the school nurse to discuss and create an individual health plan for your child. The following policy will be followed for all life-threatening allergies, where appropriate.

1. Children with food allergies will be identified at registration and throughout the year by the parent and physician. All food allergies must be communicated directly with the school nurse and updated on the annual online registration.
2. If requesting a meal accommodation, the USDA requires that a Diet Modification Request form be completed by a physician based on student need. The form may be obtained from the nutrition department or on the school website at [www.admschools.org](http://www.admschools.org).
3. If your student has an allergy that requires cafeteria accommodations the parent must request accommodations to the school nurse at registration.
4. A form allowing the Release of Health Information will be requested from the parent to aid in communication between the nurse and physician regarding the food allergy and development of a food allergy plan. This form may be obtained from the nurse or on the school website at [www.admschools.org](http://www.admschools.org).
5. Staff that work directly with children identified as having a food allergy will be trained by the school nurse. This includes, but is not limited to the teacher, associates and administration:
  - a. Allergy awareness
  - b. How to read food labels appropriately for the allergen
  - c. The student's **Food Allergy & Anaphylaxis Emergency Plan** which is located in the nurse's office

- d. The use of epinephrine auto injector (EpiPen or Auvi-Q) and location
  - e. Updated “safe snack” list on the school website
  - f. Safe hand washing procedure
6. If an allergic reaction were to occur the parent will be notified and the event will be documented. When an emergency medication is administered an emergency procedural review will be conducted with all staff involved.
  7. At Adel Elementary and Meadow View Elementary, parents will be notified if a food allergy exists in their student’s classroom. Food allergies may change during the school year based on individuals in the classroom. For these classrooms with allergies, the school nurse will provide parents with a list of “safe food resources”.
    - When providing snacks for classrooms with food allergies, the allergen cannot be listed as an ingredient, safe foods must also be free from, may contain, and/or manufactured in a facility with allergen.
  8. In Preschool – 12<sup>th</sup> grade, when providing any snacks or treats for classroom distribution, pre-packaged or store prepared foods with a complete ingredient list must be provided. Treats will be sent to school in unopened original containers. Whole, uncut fruits and vegetables are encouraged.
  9. Hand washing procedures, with soap and water, will be encouraged before and after eating. NOTE: Hand sanitizer is not effective in removing peanut protein from the skin.
  10. All staff are encouraged to eat allergen food products in designated staff areas and follow hand washing procedures.

## **STUDENT BEHAVIOR EXPECTATIONS**

### **Discipline Policy**

The Board of Directors of the Adel DeSoto Minburn Community School District hereby confirms its intent to support the school discipline policy, to support school staff who enforce the discipline policy, and to hold school staff accountable for enforcing the discipline policy.

In a teaching/learning situation it is necessary that self-discipline and a positive approach towards organization work hand in hand. These not only are desired in the classroom, but must also be evident in all areas of the school setting and at school functions. It is necessary, therefore, that a cooperative plan between students, teachers, parents, administrators, other staff members, and school board members be present. This plan should be one of support, communication, and respect. It is our belief that cooperative discipline will bring out the qualities of scholarship, leadership, citizenship and responsibility found in each of our students.

As educators it is our responsibility to develop and maintain an atmosphere that is conducive for learning. To create such an atmosphere, it is necessary to establish certain rules and regulations. So that you and your child can better understand what is expected of each student, we have developed a PK-6 discipline policy.

#### **Student’s Responsibility:**

Students should be aware of the conduct expected of them in the individual classroom, in the hallways, on the playground, on the school bus, and at any school functions or activities. S/he should be able to maintain an inner-discipline, which allows him/her to accept this responsibility and should attempt to keep a good line of communication open with teachers, school staff, parents, and administration. Students will be expected to:

- respect the rights and property of other students, adults, and the district.
- respect the authority of all school personnel.

- practice common courtesy.
- use appropriate voice levels while inside the building.
- obey all playground rules.

Students who follow the discipline policies will receive positive feedback in the following manner.

- They will receive verbal praise.
- Students will also receive written praise in the form of certificates.
- Those who follow school regulations will be allowed to participate in special school/classroom activities.

The board, administration and employees expect students to conduct themselves in a manner fitting to their age level and maturity and with respect and consideration for the rights of others. Students are expected to treat teachers, other employees, students, visitors and guests with respect and courtesy. Students may not use abusive language, profanity or obscene gestures or language.

This handbook and school district policies, rules and regulations are in effect while students are on school grounds, school district property or on property within the jurisdiction of the school district; while on school-owned and/or school-operated buses or vehicles or chartered buses; while attending or engaged in school activities; and while away from school grounds if the misconduct directly affects the good order, efficient management and welfare of the school district or involves students or staff. School district policies, rules and regulations are in effect 12 months a year. A violation of a school district policy, rule or regulation may result in disciplinary action while school is in session or while school is not in session.

Students are expected to comply with and abide by the school district's policies, rules and regulations. Students who fail to abide by the school district's policies, rules and regulations may be disciplined for conduct which disrupts or interferes with the education program; conduct which disrupts the orderly and efficient operation of the school district or school activity; conduct which disrupts the rights of other students to obtain their education or to participate in school activities; or conduct which interrupts the maintenance of a disciplined atmosphere. Disciplinary measures include, but are not limited to, removal from the classroom, detention, suspension, probation and expulsion. The discipline imposed is based upon the facts and circumstances surrounding the incident and the student's record.

The school reserves and retains the right to modify, eliminate or establish school district policies, rules and regulations as circumstances warrant, including those contained in the handbook. Students/parents are expected to know the contents of the handbook and comply with it. Students or parents with questions or concerns may contact the Elementary Principal's Office for information about the current enforcement of the policies, rules or regulations of the school district.

The following student expectations will be enforced:

Cafeteria	Hallway	Recess	Bathroom
<ul style="list-style-type: none"> <li>● Use table manners</li> <li>● Eat first, then visit quietly</li> <li>● Report spills</li> <li>● Clean up and throw</li> </ul>	<ul style="list-style-type: none"> <li>● Use walking feet</li> <li>● Remain quiet</li> <li>● Hands to yourself</li> <li>● Look ahead</li> <li>● Stay to the right side</li> </ul>	<ul style="list-style-type: none"> <li>● Play fair</li> <li>● Take turns &amp; share</li> <li>● Include others</li> <li>● Use equipment correctly</li> </ul>	<ul style="list-style-type: none"> <li>● Ask permission before using the bathroom</li> <li>● Respect others' privacy</li> </ul>

away your trash ● Walk in and out of the cafeteria		● Stay in boundaries ● Dress for the weather ● Return equipment ● Line up quickly	● Remember to flush ● Wash hands thoroughly with soap and water ● Return to class promptly
-------------------------------------------------------	--	--------------------------------------------------------------------------------------------	--------------------------------------------------------------------------------------------------

**Parent's Responsibility:**

It should be the responsibility of the parents to know and see that their child is aware of the behavior expectations in policies as set by the teachers, administration, and local school board of the Adel DeSoto Minburn Community School District. Lines of communication should be maintained in a healthy, cooperative attitude while working to attain a positive result in all instances. It is to be further noted and understood that each student and parent has the right to due process in which they may request additional information.

**Teacher's Responsibility:**

All teachers are responsible for maintaining building and classroom standards determined individually by building policy, and by school policy. Teachers are to be responsible for discipline of all students in the hallways and playground areas and at all activities in which Adel DeSoto Minburn students and teachers are involved in the teaching/learning process. Teachers are requested to sit with their students at assemblies and large group meetings for the purpose of supervision and participation. Teachers will report to the administration what may be considered more serious infractions of the school rules.

When a student demonstrates inappropriate behavior, teachers will follow the following procedures:

- The first time the student violates a rule s/he will generally receive a verbal reminder regarding the rule s/he violated.
- If a student repeats the same violation or violates another rule within a given period of time s/he will generally receive an appropriate consequence determined by the teacher or staff member involved. The teacher or staff member may also contact the parent if the situation warrants it.
- If a student is sent to the principal for continuing violations or misbehavior of a severe nature, a conference may be arranged with the student, parent, teacher, and principal. At this meeting steps will be taken to insure compliance with the discipline policy.

It is of vital importance that communication and understanding be established between teacher, student, parent, and administration when discipline problems arise.

**Principal's Responsibility:**

It will be the principal's responsibility to assist the parents, teachers, and Board of Education in seeing that students comply with rules of acceptable conduct within the classroom and all other areas of school. Students who choose not to comply with school rules and behavior standards will be dealt with in all cases in the following manner:

1. Students who are referred to the principal will be provided the chance to share their perception of the incident. The type of punishment to be administered shall be reasonable considering the nature of the student's misconduct, the age and physical condition of the student and the goal to be accomplished by the punishment. Parents will be notified of incidents of misbehavior when the incident is of a serious nature or is repetitive in nature.

2. In cases where students are consistently violating school rules or demonstrate misbehavior of a severe nature, including that which endangers other students' well-being, consideration of removal from the classroom shall be within the discretion of the person in charge of the classroom. Removal from the classroom means that a student or students are sent to the principal's office. In cases of this nature a parental conference may be requested. This conference may involve the students, his/her parents, teacher(s), and principal. Detention, probation, or an in-school or out of school suspension or a recommendation for expulsion may result from this misbehavior.

Detention means the student's presence is required during non-school hours for disciplinary purposes. The student can be required to appear prior to the beginning of the school day, after school has been dismissed for the day, or on non- school days. Whether a student will serve detention, and the length of the detention, shall be within the discretion of the building principal.

Suspension means an in-school suspension, an out-of-school suspension, and a restriction from activities or loss of eligibility. An in-school suspension means the student will attend school but will be temporarily isolated from one or more classes while under supervision. The student may not attend school activities or may not participate in a contest or extracurricular activities. An in-school suspension will not exceed ten consecutive school days. An out-of-school suspension means the student is removed from the school environment, which includes school classes and activities. An out-of-school suspension will not exceed ten days. A restriction from school activities means a student will attend school and classes and practices but will not attend or participate in school activities.

A severe infraction or continual infraction of school rules or behavior problems may be referred to the Superintendent and the Board of Education. This referral will be accompanied by a recommendation for counseling and/or expulsion for their consideration. Expulsion means the removal of a student from the school environment, which includes but is not limited to, classes and activities for a period of time set by the Board of Education. See Board Policy for details.

Students, who have been identified as special education students, may be referred for a review of the individual student's Individualized Educational Plan. The IEP may be revised to include a continuum of intervention strategies and programming to change the behavior.

### **Corporal Punishment, Restraint, and Physical Confinement and Detention**

State law forbids school employees from using corporal punishment against any student. Certain actions by school employees are not considered corporal punishment. Additionally, school employees may use "reasonable and necessary force, not designed or intended to cause pain" to do certain things, such as prevent harm to persons or property. State law also places limits school employees' abilities to restrain or confine and detain any student. The law limits why, how, where, and for how long a school employee may restrain or confine and detain a child. If a child is restrained or confined and detained, the school must maintain documentation and



must provide certain types of notice to the child's parent. If you have any questions about this state law, please contact your school. The complete text of the law and additional information is available on the Iowa Department of Education's web site: [www.iowa.gov/educate](http://www.iowa.gov/educate).

### **Illegal Items Found in School or in Students' Possession**

Students are prohibited from distributing, dispensing, manufacturing, possessing, using, and being under the influence of alcohol, drugs or look-a-like substances; and possessing or using tobacco, tobacco products or look-a-like substances. Weapons, toys that resemble weapons, or other dangerous objects are not allowed on school grounds or at school activities with the exception of weapons in the control of law enforcement officials or those being used for educational purposes and approved by the principal. Parents of students found in violation of this policy may be contacted, and the students may be reported to law enforcement officials. Students found in violation of this policy will be subject to disciplinary actions, which could include suspension or expulsion.

### **Cheating**

Students are expected to do their own schoolwork. Cheating by students on their schoolwork is considered to be unacceptable behavior. Work submitted by the student(s) who cheated will not be accepted. The work will be resubmitted by the student(s) involved. The teacher involved or principal will take the responsibility for appropriate disciplinary procedures against the student(s). Parents will be notified of cheating infractions.

### **Clothing and Grooming**

There is a connection between academic performance, students' appearance and students' conduct. Inappropriate student appearance may cause material and substantial disruption to the school environment or present a threat to the health and safety of students, employees and visitors on school grounds. Students are expected to adhere to reasonable levels of cleanliness and modesty. Students are expected to wear clothing that is appropriate to their age level and that does not disrupt the school or educational environment.

Students may not wear clothing or other apparel promoting or depicting products which are illegal for use by minors such as alcohol, tobacco, or drugs; or apparel displaying, suggesting, or implying obscene materials, profanity, or reference to subversions. Hats are to be removed when students enter the building. Face painting and costumes can cause disruptions to a learning environment and may be asked to be removed.

While the primary responsibility for appearance rests with the students and their parents, the administration reserves the right to judge what is proper and what is not proper for wear at school and/or school activities. Clothing that creates a material and substantial disruption to school/school activities or for which there is evidence indicating that such disruption is likely, may be prohibited. Common decency requires adequate coverage of the person. Clothing that reveals undergarments or lack of undergarments is inappropriate. This policy includes sagging pants, short skirts and shorts, halter tops, tops that reveal a bare midriff or back, tube tops, garments with spaghetti straps and garments with plunging or revealing necklines. Additionally, students should not wear items that could harm others or property, such as chains or metal spikes. Students will be asked by a teacher or other personnel to make the needed changes. This could include sending a student home to change. If students or parents are in doubt about the appropriateness of a piece of clothing, they are encouraged to bring additional clothing.

Students who continue to violate this rule will be subject to the following disciplinary action: Detentions may be assigned. Students may be denied participation in school (suspension) and/or school activities. Continual infractions may be viewed as insubordination.

During the winter season, students will stay on the blacktop unless they have snow boots on. If students wish to take advantage of equipment or play on snow-covered areas, they must wear snow boots and snow pants. Snow pants are encouraged during the winter season to assist students in having dry clothing when they return to the classroom. Please label winter clothing items such as coats, hats, mittens/gloves, and boots.

### **Recess**

A midday recess period is provided for all students during the school day. **All students are expected to go outside during this recess period unless they have a medical reason.** We request that a note be sent by the student's parent or doctor. A doctor's request is needed to have a student remain indoors for more than two days. Students will not be taken outdoors in times of extreme cold and during rain or wet snow.

Appropriate clothing (boots, gloves, hats, snow pants, winter jackets, etc.) must be sent with your child during cold weather. Please notify the school if you need assistance providing these items. If you have extra or outgrown items and would like to contribute them to our supply, it would be greatly appreciated, as our supply gets depleted throughout the year. If your child does not have snow boots and snow pants and there is snow on the ground, they will play on the blacktop area that has been cleared of snow during recess.

The playground is set up for use by students during the school day who are enrolled at our school. Use of the playground by these students and other community persons outside this period of time is at their own risk as the district will not be responsible for actions taken during that time.

### **Securing Electronic Devices During Federally Mandated Assessments**

One of the largest threats to test security is the use of electronic devices during the administration of the assessment. ADM has adopted the following procedures to manage student access to personal electronic devices during testing.

- PS-6: Devices are not allowed into the classroom. Devices must either be stored in a locker or left at home. Personal devices include cell phones, smart watches, or other internet connected devices that allow students to access content and/or communicate with others electronically.
- Consequences: Students who do not follow expectations for securing electronic devices will be referred to the building principal for investigation and determination of consequences based on the circumstances of the incident.

More information about ADM's assessment practices for federally mandated assessment can be found in ADM's Assessment Handbook.

## TECHNOLOGY GUIDELINES

A Google Chromebook with internet access will be provided to all DeSoto Intermediate students at a 1:1 ratio. The use of these devices, and their resources, will be in support of education and consistent with the learning objectives and mission of DeSoto Intermediate School. The Chromebooks are property of the ADM School District. Fifth grade students will keep their Chromebooks and chargers at school, unless they are checked out with the classroom teacher for the evening. Students must abide by the Terms and Conditions for Use listed below. Failure to do so will result in suspension of privileges, cancellations of privileges, and/or disciplinary action; however, if individual privileges are suspended, students will have a means of accessing any necessary technology for whole group instruction only

Terms and Conditions for Use:

1. Students will follow the classroom rules of device use as explained by teachers.
2. Students will treat all devices and equipment with care.
3. Students will use the internet for education only and access sites authorized by their teachers.
4. Students will tell a teacher right away if they encounter content that makes them feel uncomfortable, or is not appropriate, and they will not invite other students to view it.

## TRANSPORTATION GUIDELINES

It is our goal for students to have an enjoyable and safe ride to and from school. If questions or concerns develop, especially regarding discipline matters, please contact your child's bus driver first as s/he may be able to respond directly to your inquiry with firsthand information. There may be times when your child's bus driver may not be able to respond directly to your inquiry. In situations like this, please make contact with either your child's principal or Richard Beechum, Transportation Director.

**Transportation Director** The transportation director can be reached at, 993-5321 from 6:30 – 5:00 daily if your child will not be riding the bus or you need other information in regard to a change in bus route.

**Morning Pick-up** The pick-up time is an approximate time that may vary with route conditions, weather, equipment, etc. It is recommended that students be ready a few minutes ahead of time. If your child/children will not be riding the bus, you may call the driver, Adel Elementary or DeSoto Intermediate Schools. The Adel Elementary and DeSoto Intermediate Schools have direct radio contact with all buses to share necessary information. ***The bus driver is not required to wait for students at a bus stop who are not present at the designated pick-up time.*** Students must wait for the driver's signal before crossing the road to board the bus.

**Evening Delivery** The return time is an approximate time that may vary with route conditions, weather, equipment, etc. ***Students must wait for the driver's signal before crossing the road after departing the***

**bus.**

**Bus Radio System** Each school bus is equipped with a radio system. If there is a need to make contact with a child on a bus or to notify the bus driver that a child will not be riding the bus to school, please call the school office where your child attends.

### **REGULATIONS REGARDING STUDENTS RIDING SCHOOL BUSES**

The primary responsibility for the bus driver is to drive the bus in a safe and courteous manner. Students can assist the driver in achieving this goal by cooperating fully with the regulations listed below. Activity trip chaperones and coaches are responsible for enforcing these regulations when students are involved with school-sponsored activities.

1. Students are to take a seat immediately upon entering the bus and remain seated while the bus is in motion.
2. Students may talk with normal tones. Loud and/or vulgar language is not acceptable.
3. Students' books and other personal property must be properly stored either on their laps or under their seat. No glass jars or bottles are to be carried on the bus. The center aisle shall be clear at all times.
4. Students should assist in keeping the bus clean. Foods such as candy, gum, pop, etc. should not be eaten on the bus.
5. No actions, which might distract the driver from driving the bus in a safe manner on the road, will be tolerated.
6. Students will be held responsible and liable for any damage they may do to any part of the bus.

### **School Bus Discipline Policy:**

- Minor Incidents:
  - Driver completes a bus discipline referral form and works with the transportation director.
  - The transportation director will investigate, determine consequences (if necessary), meet with students, call parents, and send a copy of referral to building administrators.
- Major Incidents:
  - The transportation director will involve building administrators with elevated, serious behaviors, or repeated issues with students.
  - In these cases, building administrators will get a referral from the transportation director, investigate, determine consequences, and contact parents.
  - Incidences include: bullying, fighting, swearing, not obeying the driver, unsafe behavior,

insubordination, etc.

### **School Bus Video Cameras:**

The ADM Community School District Board of Education has authorized the use of video cameras on school district buses. The video cameras will be used to monitor student behavior for the purpose of maintaining order on the school buses and to promote and maintain a safe environment. Students and parents are hereby notified that the content of the videotapes may be used in a student disciplinary proceeding.

**Transportation Information** Detailed information about transportation, walk zones, etc. can be found on the [district website](#). Please note, school buildings will no longer be used as bus stops. Riders will be required to get on and off the bus at their district assigned neighborhood or residence bus stop.

## **NUTRITION SERVICES**

The mission of the Nutrition Services Department is committed to serving High Quality balanced meals to provide all students the fuel they need to learn, grow and achieve their full potential.

If you have questions, feel free to contact Nutrition Services at 515.993.4283 ext.1030 or email:

- Billie Veach - Nutrition Director [billie.veach@admschools.org](mailto:billie.veach@admschools.org)
- Dee McCauley - Administrative Assistant [dee.mccauley@admschools.org](mailto:dee.mccauley@admschools.org)

### **Nutrition Services Software System**

ADM Nutrition Department is utilizing Linq for all of their food service needs.

Families are encouraged to create a account by visiting: <https://linqconnect.com>

In this system families will be able to:

- Apply for Free or Reduced Meals
- View School Menus
- Make Meal Payments
- Manager your students accounts

### **FREE/REDUCED FEES**

An eligibility application for free/reduced meals must be filled out to receive free/reduced fees. Free and reduced priced meals are available to those families who qualify. Information regarding free or reduced priced meals will be provided at least twice annually to the parents or guardians of all enrolled students or to apply visit: <https://linqconnect.com>

## **2024-2025 Meal Prices**

<b>Meals/Items</b>	<b>ADM SY24-25</b>
<b>Breakfast:</b>	
	<b>Price</b>
Grades K-5:	\$2.50
Grades 6-8:	\$2.50
Grades 9-12:	\$2.50
Adult:	\$3.00
Milk:	\$0.50
<b>Lunch:</b>	
	<b>Price</b>
Grades K-5:	\$3.40
Grades 6-8:	\$3.40
Grades 9-12:	\$3.65
Adult:	\$5.00
Milk:	\$0.50

**Negative Account Balances**

The District provides the opportunity to purchase breakfast and lunch from the school cafeteria. Each meal meets or exceeds the federal nutrition standards. Payment is expected no later than when the meal is served. Payment may be in cash, check, or as a debit against funds deposited into an established student lunch account.

Ala carte items are not part of the USDA program and are not allowed to be charged if a student has a negative balance.

**Citizenship**

Being a citizen of the United States, of Iowa and of the school district community entitles students to special privileges and protections as well as requiring the students to assume civic, economic and social responsibilities and to participate in their country, state and school district community in a manner that entitles them to keep these rights and privileges.

As part of the education program, students have an opportunity to learn about their rights, privileges and responsibilities as citizens of this country, state and school district community. As part of this learning opportunity, students are instructed in the elements of good citizenship and the role quality citizens play in their country, state and school district community.

### **Flag Salute, National Anthem and Pledge**

A student shall not be forced to participate in the Pledge of Allegiance, singing of the National Anthem, or saluting of the flag. Recognizing the fact that students have a responsibility to demonstrate a proper respect for their country and its flags, a student choosing **not** to participate shall either sit or stand, remaining respectfully silent at all times.

### **Care of School Property**

Students are expected to take care of school property including desks, chairs, books, lockers and school equipment. Vandalism is not tolerated. Students found to have destroyed or otherwise harmed school property may be required to reimburse the school district. In certain circumstances, students may be reported to law enforcement officials.

### **Books/Textbooks**

All school books must be returned at the end of the school year. Students are responsible for their textbooks, library books, etc. and will be charged accordingly for lost books, for the abuse of textbooks, and other materials. If books are not returned, students are charged a replacement fee. Damage to a book in excess of normal wear and tear is also charged to the student. Replacement costs and penalties for damages will be determined by the office and collected by the classroom teachers.

### **Student Lockers**

Student lockers are the property of the school district. Students shall use the lockers assigned to them for storing their school materials and personal items necessary for attendance at school. It shall be the responsibility of each student to keep the student's assigned locker clean and undamaged. The expenses to repair damage done to a student's locker are charged to the student.

A student's locker can be searched whenever an administrator or teacher has a reasonable suspicion that a criminal offense has occurred or a school district policy, rule or regulation bearing on school order has been violated and the administrator or teacher has reasonable grounds that the search will produce evidence of the violation.

Items in violation of school district policies, rules or regulations found in student lockers are confiscated. Illegal items may be given to law enforcement officials.

Locker inspections may be conducted periodically throughout the school year. Inspections are conducted in the

presence of the student or another person. These inspections are generally for the purpose of ensuring that lockers are clean and well kept.

### **Inappropriate Items at School**

Students may not possess toys that resemble weapons, video games, weapons, and other similar items on school grounds or at school activities. The items will be taken away from the students and returned at a later date. If a student uses an electronic reader at school, they are asked to have their teacher store the device during non-reading times. These devices are to be used for reading and could be asked to remain at home if they are used for other purposes.

### **District Response to a Threat or Incident of Violence by a Student**

In the case of any threat of violence or incident of violence that results in injury, property damage or assault by a student, the teacher will report to the school principal or lead administrator within 24 hours of the incident. The principal or lead administrator will notify the parent or guardian of the student(s) who threatened or perpetrated an act of violence and the student(s) who the threatened or perpetrated act of violence was made against within 24 hours after receipt of the teacher's report and complete an investigation of the incident as soon as possible. The classroom teacher may also notify the parent or guardian of the student who made the threat or caused the incident, and the parent or guardian of the student against whom the threat or incident was directed (2023 Iowa Acts, chapter 96 (House File 604), sec. 4).

An investigation will be initiated by the principal or lead administrator upon learning of an incident of violence or threat of violence through any credible means. If the principal or lead administrator finds that an incident of violence or threat of violence did occur, the administrator will determine the level of threat or incident by considering all aspects of the situation, including the student's intent and knowledge of the impact of their actions, their developmental level and context of the incident.

The resolution will focus on identifying the cause behind the behavior and appropriate corrective action (2023 Iowa Acts, chapter 96 (House File 604), sec. 7, new section 279.79, subsections 1 and 4). A student who makes a threat of violence, causes an incident of violence that results in injury or property damage, or who commits an assault, will be subject to escalating levels of discipline for each occurrence. When appropriate, referrals will be made to local law enforcement. The district retains the authority to assign the level of disciplinary measures appropriate to the severity of the threat of violence or incident of violence (2023 Iowa Acts, chapter 96 (House File 604), sec. 7, new section 279.79, subsection 5).

View the following policies to learn about the escalating levels of discipline identified for each occurrence of threats of violence or incidents of violence as well as other definitions and information about this policy.



- Policy 503.08: Discipline of Students Who Make Threats of Violence or Cause Incidents of Violence
- Regulation 503.08-R(01): Discipline of Students Who Make Threats of Violence or Cause Incidents of Violence

### **Cell Phones/Personal Electronic Devices**

Personal electronic devices (cell phones/smart watches) are not to be used during the school day (including recess and lunch). Students must place their cell phones in their school locker at the beginning of the day where the device will remain until dismissal. Cell phones should be turned off or put in silent mode to avoid disrupting the learning environment. Staff will not require students to use a cell phone for any purpose. The school is not responsible for lost or stolen cell phones.

If a student violates cell phone expectations, he/she may face disciplinary actions, which could include losing the privilege to bring the device to school. In such cases, parents/guardians may be asked to pick up the device from the school office.

Confiscation/Searches of cell phones include:

- Use of cell phones during class for any reason.
- Taking pictures in the restroom.
- Taking any picture of another person for the purpose of ridiculing the other person.
- Use of a cell phone or any device to cheat.
- Use of a cell phone or any device to harass another person.

If you are in need of communicating with your child, please refrain from texting him/her, and call the office instead. We will ensure that your message gets delivered. Additionally, if a student needs to contact a parent/guardian, he/she can do so from the front office.

### **Student Property at School**

Students who bring items to school assume all risks associated with their action. Students should not be encouraged to bring personal items to school unless the items are related to specific classroom activities. If a staff member feels that an item or items a student has brought to school is inappropriate, potentially dangerous to the individual student or another person, or a disruption to the school environment, that staff member may take that item or items from the student. The item or items in contention, especially if it might be potentially dangerous to the student or another person, will be brought to the attention of the principal.

An inappropriate or potentially dangerous item or items will be either destroyed or returned to the student's parent or guardian. Disciplinary action, if any is necessary, will be determined in an appropriate manner and time.

### **Bicycles**

Students may ride their bicycles to school. Bicycles are to be walked when on the school property. All bicycles are to be parked in the bicycle rack area. Students are to park their bicycles immediately upon arriving on the school grounds. No loitering is allowed near the bicycle rack. The school district is not responsible for students riding to or from school, and assumes no responsibility for bicycles on the school grounds.

### **Roller Blades, Wheeled Shoes, Scooters, and Skateboards**

Students may not use roller blades, wheeled shoes, scooters, and/or skateboards (and similar equipment) on the school grounds during school hours. Exception: an approved activity in Physical Education class.

### **Gum, Candy**

Gum and candy should be left at home. Students are not allowed to bring gum and candy to school unless invited to for a classroom reward. Students who are repeat offenders will be given consequences at the discretion of the teacher/administration.

### **Selling and Trading Items at School**

Students or staff members are not permitted to solicit, sell, gift or trade merchandise to other students or staff members at school.

### **Room Parties, Treats, and Invitations**

Fall, Winter, and Spring parties may be held at various times throughout the year. Parents who do not want their child to participate in these parties should notify their child's homeroom teacher or the principal's office. A written request is preferred.

Treats for students have been part of recognizing a student's birthday at school for many years. We realize this is an individual preference type of activity and some students do this while others do not. Please know that when providing treats for celebrations, including birthdays, the District Food Allergy Policy must be followed (refer to page 18). In Preschool – 12<sup>th</sup> grade, when providing any snacks or treats for classroom distribution, pre-packaged or store prepared foods with a complete ingredient list must be provided. Treats will be sent to school in unopened original containers. Whole, uncut fruits and vegetables are encouraged. Snacks brought to school that do not follow this policy will be sent home.

Birthday Treat Criteria:

- Students may choose to bring a birthday treat to share with all members of their homeroom cohort. The homeroom teacher will identify a time in the day to allow for this treat to be enjoyed with the entire class.
- Birthday treats will not be allowed to be distributed during lunch or recess time.

Students are welcome to bring water to school in a water bottle that fully seals to prevent classroom spills. We ask families to refrain from adding flavor packets to the water as the color causes staining on carpeted areas.

Distributing party invitations at school creates problems because of who is and who is not invited. **Party invitations will not be distributed at school.**

### **Posting of Information**

All flyers distributed to students or staff must receive approval from the Office of the Superintendent. Please allow ample time for your flier to be processed. Please provide a link or email an electronic version of your flier to Dusty Strunk at [dstrunk@adm.k12.ia.us](mailto:dstrunk@adm.k12.ia.us) to receive approval. Flyers will be posted on the first business day of every month, September through May. Hard copies of flyers may be sent to the Administration Center for distribution to each building, so long as they are separated and marked with each building's name. These hard copies will be made available for voluntary pick up in the office area.

### **Religion-Based Exclusion from School Program**

The ADM Community School Board recognizes the existence of various religious beliefs and acknowledges the American tradition of separation of church and state. Parents who wish to have their child excluded from a school program because of religious beliefs must inform the principal. If the principal grants an exemption, an alternative activity or study for the student. In notifying the principal, the parents shall abide by the following:

- The notice shall be in writing.
- The objection shall be based on religious beliefs.
- The objection shall state which activities or studies violate their religious beliefs.
- The objection shall state a proposed alternate activity or study.

## **ACTIVITIES**

### **Assemblies Guidelines**

Throughout the year the school district sponsors school assemblies. Attendance at these assemblies is a privilege. Students must act in an orderly fashion and remain quiet on their way to an assembly, during an assembly and on their way back to the classroom after an assembly. Students attend assemblies unless, for disciplinary reasons, the privilege is taken away. Students who are not attending assemblies shall report to the Principal's office during assemblies.

### **Field Trips**

A field trip is a learning activity which takes children from their regular meeting place for the purpose of seeing or doing something to further specific skills and understanding. The teacher plans and is responsible for the activities involved in a field trip.

Due to the cost of providing such events parents will be given an opportunity to donate money to a field trip fund. Making a donation to field trips is an option for families. Donations will be used to offset some of the cost of field trips at the elementary level.

A parent permission form for all field trips off school grounds will be completed at the beginning of the school year through the registration process. Parents are requested to complete this form granting permission for their child to participate in field trips off school grounds throughout the school year with prior notification being supplied by their child's teacher.

Field trips will begin and end at school and will be scheduled during regular school hours if possible. Before each field trip the teacher will send home basic information regarding that particular experience. Children who are not permitted to participate in the field trip will remain at school under the direction of another teacher.

The only children that go on our field trips are students that attend Adel DeSoto Minburn. Parents volunteers may be asked to attend field trips as chaperones depending on the nature of the field trip and space permitted.

### **Activity/Field Trip Bus**

The school district may sponsor an activity/field trip bus to transport students to school activities. Riding on the activity/field trip bus is a privilege that can be taken away. Students who ride an activity/field trip bus must ride to and from the event on the bus. Students ride home on the activity/field trip bus unless prior arrangements have been made with the principal or the parent personally appears and requests to transport the student home.

### **School Pictures**

Class and individual pictures are taken yearly. Parents will be notified of the time pictures will be scheduled. Information regarding the cost of the pictures and other details will be sent home. The purchasing of pictures is entirely the parent's option and no effort will be made by the school to encourage the parent's option. School picture dates are listed on the ADM website and in electronic correspondence.

## **NOTICES**

### **Abuse of Students by District Personnel**

Physical or sexual abuse of students, including but not limited to sexual or physical relationships, grooming behavior, and otherwise inappropriate relationships with students by employees will not be tolerated. The definition of employees for the purpose of this policy includes not only those who work for pay but also those who are volunteers of the school district under the direction and control of the school district. Employees found in violation of this policy will be subject to disciplinary action up to and including discharge.

The school district will respond promptly to allegations of abuse of students by school district employees by investigating or arranging for the investigation of an allegation and timely reporting to all relevant agencies as required by law. The processing of a complaint or allegation will be handled confidentially to the maximum extent possible. Employees are required to assist in the investigation when requested to provide information and to maintain the confidentiality of the reporting and investigation process.

The school district has appointed a Level I investigator and alternate Level I investigator.

- Level 1 Investigator: Matt Lohmann
- Level 1 Alternate Investigator: Amy Hemphill

The school district has also arranged for a trained, experienced professional to serve as the Level II investigator.

- Level II Investigator: Adel Police Department

The Level I investigator and alternate will be provided training in the conducting of an investigation at the expense of the school district.

### **Enrollment Regulations**

Children in the school district community will be allowed to enroll in the school district's regular educational program at age five (5). The child must be age five (5) on or prior to September 15th to participate in the school district's kindergarten program. The child must be age six (6) on or prior to September 15th to begin the first grade of the educational program. The board of education may exclude a child under age six (6) under certain conditions.

### **Nondiscrimination Statement**

Students, parents, employees, applicants for employment, and others doing business with or performing services for the Adel DeSoto Minburn Community School District are hereby notified that this school district does not discriminate on the basis of race, color, national origin, sex, disability, religion, creed, age (for employment), marital status (for programs), sexual orientation, gender identity and socioeconomic status (for programs) in admission or access to, or treatment in, its educational programs and activities and in its hiring and employment practices, as provided by applicable federal and state law.

There is a grievance procedure for processing complaints of discrimination. Any person having inquiries or complaints concerning the school district's compliance with the regulations implementing Title VI, Title VII, Title IX, the Americans with Disabilities Act (ADA), § 504 or *Iowa Code* § 280.3 is directed to contact:

Eric Brown, Business Manager

District Administration Center

215 N. 11<sup>th</sup> St. Adel, IA 50003

(515) 993-4283

[ebrown@admschools.org](mailto:ebrown@admschools.org)

Office hours: 8:00 a.m. – 4:30 p.m. Monday through Friday

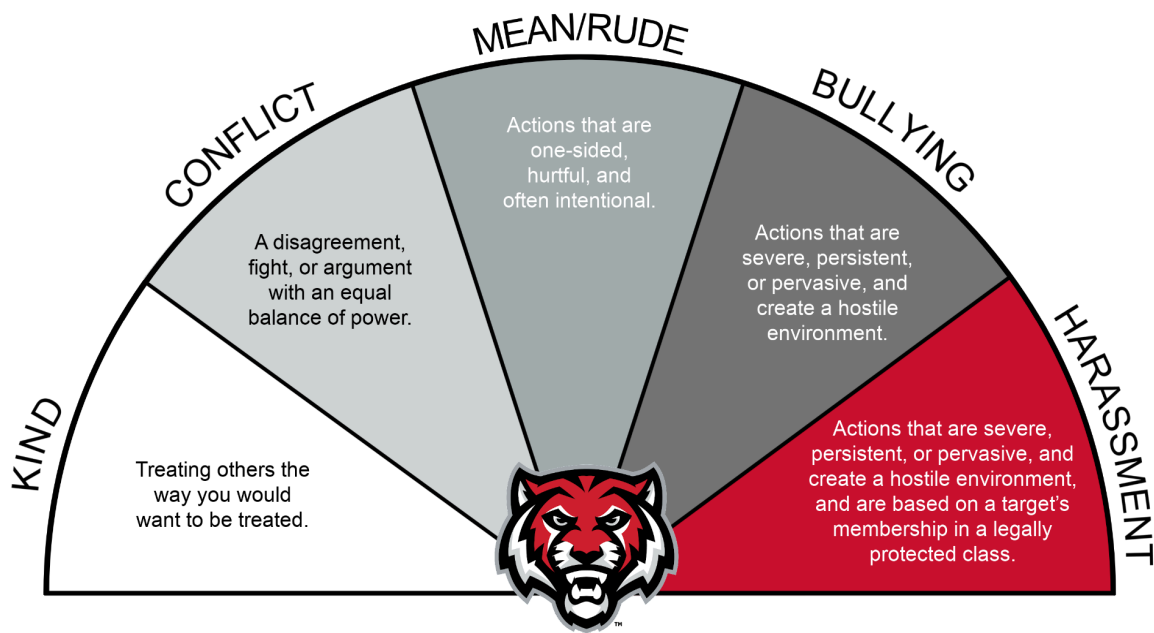
Eric Brown has been designated by the school district to coordinate the school district's efforts to comply with the regulations implementing Title VI, Title VII, Title IX, the ADA, § 504 and *Iowa Code* § 280.3. Or the Director of the Office for Civil Rights U.S. Department of Education, Citigroup Center, 500 W. Madison Street, Suite 1475, Chicago, IL 60661-7204, Telephone: (312) 730-1560, FAX: (312) 730-1576, Email: [OCR.Chicago@ed.gov](mailto:OCR.Chicago@ed.gov).

### Harassment and Bullying Policy

#### Anti-Bullying and Harassment:

Students and staff at ADM and all schools experience and observe a wide variety of social behaviors and incidents throughout each school year. These behaviors and incidents can range from kind words and actions to student conflict, incidents of mean and rude behavior, and actions that constitute bullying or harassment.

The social behavior scale below has been developed to help promote common vocabulary and definitions of behaviors that students, parents, and staff may experience, observe, or be informed about throughout the school year.



The ADM Community School District is committed to providing all students, employees, and volunteers with a safe and civil school environment in which all members of the school community are treated with dignity and respect. Bullying and/or harassment of or by students, employees, and volunteers is against federal, state, and local policy and is not tolerated by the board.

“Harassment” and “bullying” mean any repeated or potentially repeated electronic, written, verbal, or physical act or other ongoing conduct toward an individual based on any trait or characteristic of the individual which **creates an objectively hostile school environment** that meets **one or more of the following conditions**:

1. Places the individual in reasonable fear of harm to the individual’s person or property.
2. Has a substantial detrimental effect on the individual’s physical or mental health.
3. Has the effect of substantially interfering with the individual’s academic or career performance.
4. Has the effect of substantially interfering with the individual’s ability to participate in or benefit from the services, activities, or privileges provided by a school.

“Trait or characteristic of the individual” includes but is not limited to age, color, creed, national origin, race, religion, marital status, sex, sexual orientation, gender identity, physical attributes, physical or mental ability or disability, ancestry, political party preference, political belief, socioeconomic status, or familial status. Procedures for addressing alleged bullying or harassment are outlined in Board Policies 103.00 and 108.00.

To provide ADM students, parents, and staff with clear definitions of social behaviors that include harassment, bullying, peer conflict, and mean/rude behavior, the criteria for what constitutes bullying or harassment, and information about how to respond, report, and get help, the ADM School District has developed an Anti-Bullying and Harassment handbook. Please use the following link to access the handbook: (The handbook can also be viewed on ADM’s website).

[ADM Anti-Bullying and Harassment Handbook](#)

**How To Get Help:**

PEER CONFLICT	MEAN/RUDE BEHAVIOR	BULLYING	Harassment
Use conflict- resolution skills to talk it out : <ul style="list-style-type: none"> <li>● I-messages</li> <li>● Perspective Taking</li> <li>● Agree on a solution</li> <li>● Move on!</li> </ul>	Focus on your circle of control  Walk away/ignore  Use an I-message to share how you feel (I felt... when you...I need....)	Do not engage  Do not bully back or retaliate  Note possible witnesses  Report to a trusted adult	Do not engage  Do not retaliate  Note possible witnesses  Report to a trusted adult
<b>HOW TO GET HELP</b>	<b>HOW TO GET HELP</b>	<b>HOW TO GET HELP</b>	<b>HOW TO GET HELP</b>

Talk to a trusted adult	Save text messages or screenshot digital evidence	If something happens at school, get help right away	If something happens at school, get help right away
Talk with your parents			
Ask your school counselor for support	Tell a trusted adult	Save text messages or screenshot digital evidence	Save text messages or screenshot digital evidence
	Talk with your parents	Report to a trusted adult ASAP	Report to a trusted adult ASAP
		Talk with your parents	Talk with your parents
		Complete and Submit a <a href="#">Complaint Form</a> to your building principal	Complete and Submit a <a href="#">Complaint Form</a> to your building principal
		For more information about how to file a complaint, please review the <a href="#">ADM Anti-Bullying and Harassment Handbook</a>	

**District Response to a Threat or Incident of Violence by a Student**

In the case of any threat of violence or incident of violence that results in injury, property damage or assault by a student, the teacher will report to the school principal or lead administrator within 24 hours of the incident. The principal or lead administrator will notify the parent or guardian of the student(s) who threatened or perpetrated an act of violence and the student(s) who the threatened or perpetrated act of violence was made against within 24 hours after receipt of the teacher’s report and complete an investigation of the incident as soon as possible. The classroom teacher may also notify the parent or guardian of the student who made the threat or caused the incident, and the parent or guardian of the student against whom the threat or incident was directed (2023 Iowa Acts, chapter 96 (House File 604), sec. 4).

An investigation will be initiated by the principal or lead administrator upon learning of an incident of violence or threat of violence through any credible means. If the principal or lead administrator finds that an incident of violence or threat of violence did occur, the administrator will determine the level of threat or incident by considering all aspects of the situation, including the student's intent and knowledge of the impact of their actions, their developmental level and context of the incident.

The resolution will focus on identifying the cause behind the behavior and appropriate corrective action (2023 Iowa Acts, chapter 96 (House File 604), sec. 7, new section 279.79, subsections 1 and 4). A student



who makes a threat of violence, causes an incident of violence that results in injury or property damage, or who commits an assault, will be subject to escalating levels of discipline for each occurrence. When appropriate, referrals will be made to local law enforcement. The district retains the authority to assign the level of disciplinary measures appropriate to the severity of the threat of violence or incident of violence (2023 Iowa Acts, chapter 96 (House File 604), sec. 7, new section 279.79, subsection 5).

View the following policies to learn about the escalating levels of discipline identified for each occurrence of threats of violence or incidents of violence as well as other definitions and information about this policy.

- Policy 503.08: Discipline of Students Who Make Threats of Violence or Cause Incidents of Violence
- Regulation 503.08-R(01): Discipline of Students Who Make Threats of Violence or Cause Incidents of Violence

### **ADM Community Resources:**

- Ambulance/Fire/Law Enforcement: 911 or 515-993-4567
- Crisis Intervention and Advocacy Center (24-hour crisis line): 515-993-4095, 1-800-400-4884, 1-800-550-0004 (Spanish speaking number)
- Child Abuse/Neglect: 1-800-652-9516
- Dallas County Hospital: 515-465-3547
- YESS (Project Safe Place...provides immediate help and confidential help for ages 11-17 and their families): 515-243-7499
- Teen Line (When you just aren't sure who to talk to, teen line can help confidentially): 1-800-443-8336
- Youth Law Hotline: 1-800-728-1172
- Monte Keller, School Resource Officer: 515-993-4584 (ADM High School) or 515-993-6723 (Adel Police Office)
- Sexual Abuse/Assault Toll Free Youth Support line: 1-800-443-8836
- West Central Mental Health: 515-993-4535
- Hawk-I Health - online application - <http://www.hawk-i.org/>
- Iowa Legal Aid - <http://www.iowalegalaid.org/ia/homepage.html>

### **Homeless Students**

In accordance with Chapter 33, Iowa Administrative Code, the Adel DeSoto Minburn Community School District encourages homeless children and youth to enroll in school. For information, please contact the Superintendent's Office, 215 North 11<sup>th</sup> Street, Adel, Iowa 50003. Phone number: 515-993-4283.

### **Human Growth and Development**

The Adel DeSoto Minburn Community School District has identified Human Growth and Development curriculum objectives that are infused throughout the curriculum. Every grade and subject level has an outline of the

objectives addressed. Parents/guardians may examine this outline and the teaching materials at any time. If parents find topics objectionable, they may choose to remove their child/children from the class during the discussion of these topics. Please contact your building principal if you have concerns.

### **Open Enrollment**

[House File \(HF\) 2589](#) eliminates the March 1 deadline for open enrollment. This change allows parents/guardians to apply for open enrollment at any time without the need for good cause. The receiving district may deny an open enrollment request if one of the following applies:

- The application violates the district's insufficient classroom space policy,
- The district does not have the appropriate special education program,
- The application would adversely affect the district's implementation of a court-ordered desegregation plan, or
- The student has been expelled or suspended.

If a parent/guardian moves and wishes for their student to continue at the original resident district under open enrollment (often known as the "continuation rule"), requests cannot be denied due to insufficient classroom space policies

For further details, see the Department of Education website or contact Dusty Strunk in the ADM District Office at 993- 4283 ext. 7090.

### **Section 504 of the Rehabilitation Act of 1973**

Section 504 of the Rehabilitation Act of 1973 prohibits discrimination against persons with a disability in any program receiving federal financial assistance. In order to fulfill obligations under Section 504, the Adel DeSoto Minburn School District has the responsibility to avoid discrimination in policies and practices regarding its personnel and students. No discrimination against any person with a disability should knowingly be permitted in any of the programs and practices of the school system. If there are questions, please feel free to contact the building principal.

### **Student Directory Information**

The Adel DeSoto Minburn Community School District and/or principal of each building may release the following types of directory information to the public using discretion relative to the privacy of the student and the family and the totality of the surrounding circumstances: *NAME, ADDRESS, TELEPHONE LISTING, DATE AND PLACE OF BIRTH, MAJOR FIELD OF STUDY, PHOTOGRAPH AND LIKENESS, PARTICIPATION IN OFFICIALLY RECOGNIZED ACTIVITIES AND SPORTS, WEIGHT AND HEIGHT OF MEMBERS OF ATHLETIC TEAMS, DATES OF ATTENDANCE, DEGREES AND AWARDS RECEIVED AND THE MOST RECENT PREVIOUS SCHOOL OR INSTITUTION ATTENDED BY THE STUDENT.*

Parents who do not want their child's directory information to be released and/or published must notify their

principal in writing no later than September 15th of the school year.

### **Student Records Policy**

The Adel DeSoto Minburn Community School District maintains records on each student in order to facilitate the instruction, guidance, and educational progress of the student. The records contain information about the student and his/her education and may include, but are not limited to the following types of records: Identification data, attendance data, record of achievement, family background data, aptitude tests, educational and vocational plans, honors and activities, discipline data, objective counselor or teacher ratings and observations, and external agency reports.

The records of each student are generally located in the school that s/he is attending. Any exception will be noted in the student's other records or by the person in charge of record maintenance for each school building. The name and position of the person responsible for maintenance of student records for each building is listed below:

Adel Elementary Mrs. Kimberly Anderson 515-993-4285  
Meadow View Elementary Mrs. Jodi Banse 515-478-1321  
DeSoto Intermediate Mrs. Amy Hemphill 515-834-2424  
ADM Middle School Mrs. Kim Timmerman 515-993-3490  
ADM High School Mr. Lee Griebel 515-993-4584

The following persons, agencies, and organizations may have restricted access to student records without prior written consent of the parent or student over the age of 18 years. Any other access to student records shall be only upon written consent or upon court order or legally issued subpoena.

1. Other school officials, including teachers, determined to have legitimate educational interest in the information;
2. Another school where the student seeks or intends to enroll;
3. Specified government officials for audit or evaluation purposes (e.g., DE or ADA officials, CPAs, state auditor);
4. Appropriate parties in connection with financial aid to a student to enable the student to attend an education institution;
5. Organizations conducting certain studies for or on behalf of the school;
6. Accrediting organizations;
7. Juvenile justice authorities under the terms of Iowa Code section 280.25;
8. Appropriate officials in case of health and safety emergencies;
9. Parents of dependent students as defined in the IRS Code;
10. Pursuant to court order.

Student records are reviewed and inappropriate material removed periodically and, at a minimum, whenever a student moves from the elementary level to middle school level to high school level, and when a student transfers out of the district. Those records not of permanent importance are destroyed within three years of graduation or discontinued attendance.

Parents of students under age 18 and students over age 18 may exercise the opportunity to review educational records of the student, to obtain copies of the records, to write a response to material in the record, to challenge the content of the record on grounds of inappropriateness, inaccuracy, or an invasion of privacy, and to have the records explained.

Students and parents may file with the Department of Education, complaints concerning alleged failures of the school district to comply with federal legislation dealing with student records. Correspondence should be addressed to: Family Policy Compliance Office, US Department of Education, 400 Maryland Avenue, SW, Washington, DC 20202-4605

### **Waiver of Student Fees**

A student whose family meets the income guidelines for free or reduced price lunch or other applicable income standards is eligible to have his/her student fees waived or partially waived. Parents or students who believe they may qualify for a waiver should contact the Superintendent's Office for a waiver form. This waiver does not carry over from year to year and must be completed annually.

### **Definitions**

In this handbook, the word "parent" also means "guardian" unless otherwise stated. An administrator's title, such as superintendent or principal, also means that individual's designee unless otherwise stated. The term "school grounds" includes the school district facilities, school district property or premises, property within the jurisdiction of the school district or school owned or school operated buses or vehicles and chartered buses. The term "school facilities" includes school district buildings. The term "school activities" means all school activities in which students are involved whether they are school-sponsored or school-approved, whether they are an event or an activity, or whether they are held on or off school grounds.



1. Parent/guardian provides signed and dated authorization for medication to be self-administered.
2. Physician provides written authorization containing:
  - a. Purpose of the medication
  - b. Prescribed dosage
  - c. Times or circumstances under which the medication is to be administered
  - d. Contradictions or side effects
3. The school district or accredited nonpublic school shall notify the parent or guardian of the student, in writing, that the school district or accredited nonpublic and its employees are to incur no liability, except for gross negligence, as a result of self-administration of medication by the student. A school district or accredited nonpublic school and its employees acting reasonably and in good faith shall incur no liability for any improper use of medication as defined in this section or for supervising, monitoring, or interfering with a student's self-administration of medication as defined by section 280.16 of on the Iowa Code.

\_\_\_\_\_ Signature of  
Parent or Guardian                      Date Signed

Please fill out above Medication Authorization Form above and obtain Physician signature below to allow student to self-administer medication for asthma or other airway constricting disease.

\_\_\_\_\_ Medication  
Dosage                      Route

\_\_\_\_\_ Purpose of  
Medication and Instructions

\_\_\_\_\_ Prescriber's Signature                      \_\_\_\_\_ Date

HARASSMENT COMPLAINT FORM

Name of complainant \_\_\_\_\_

Position of complainant \_\_\_\_\_

Date of complaint \_\_\_\_\_

Name of alleged harasser \_\_\_\_\_

Date and place of incident or incidents \_\_\_\_\_

Description of misconduct \_\_\_\_\_

Name of witnesses (if any) \_\_\_\_\_

Evidence of harassment, i.e., letters, photos, etc. (attach evidence if possible)

---

Any other information\_\_\_\_\_

I agree that all of the information on this form is accurate and true to the best of my knowledge.

Signature\_\_\_\_\_

Date\_\_\_\_\_

ADEL DESOTO MINBURN COMMUNITY SCHOOL DISTRICT BOARD OF DIRECTORS